

REFERENCE PLAN OF PARCEL B (D.D. 351331) OF LOT 66, GALIANO ISLAND, COWICHAN DISTRICT, EXCEPT PART IN PLAN 6907

PURSUANT TO SECTION 100(1)(c) OF THE LAND TITLE ACT
BCGS 92B.093

0 10 20 30 40 50m
ALL DISTANCES ARE IN METRES UNLESS OTHERWISE NOTED
THE INTENDED PLOT SIZE OF THIS PLAN IS 854 mm IN WIDTH BY 560 mm IN HEIGHT (D-SIZE) WHEN PLOTTED AT A SCALE OF 1:750

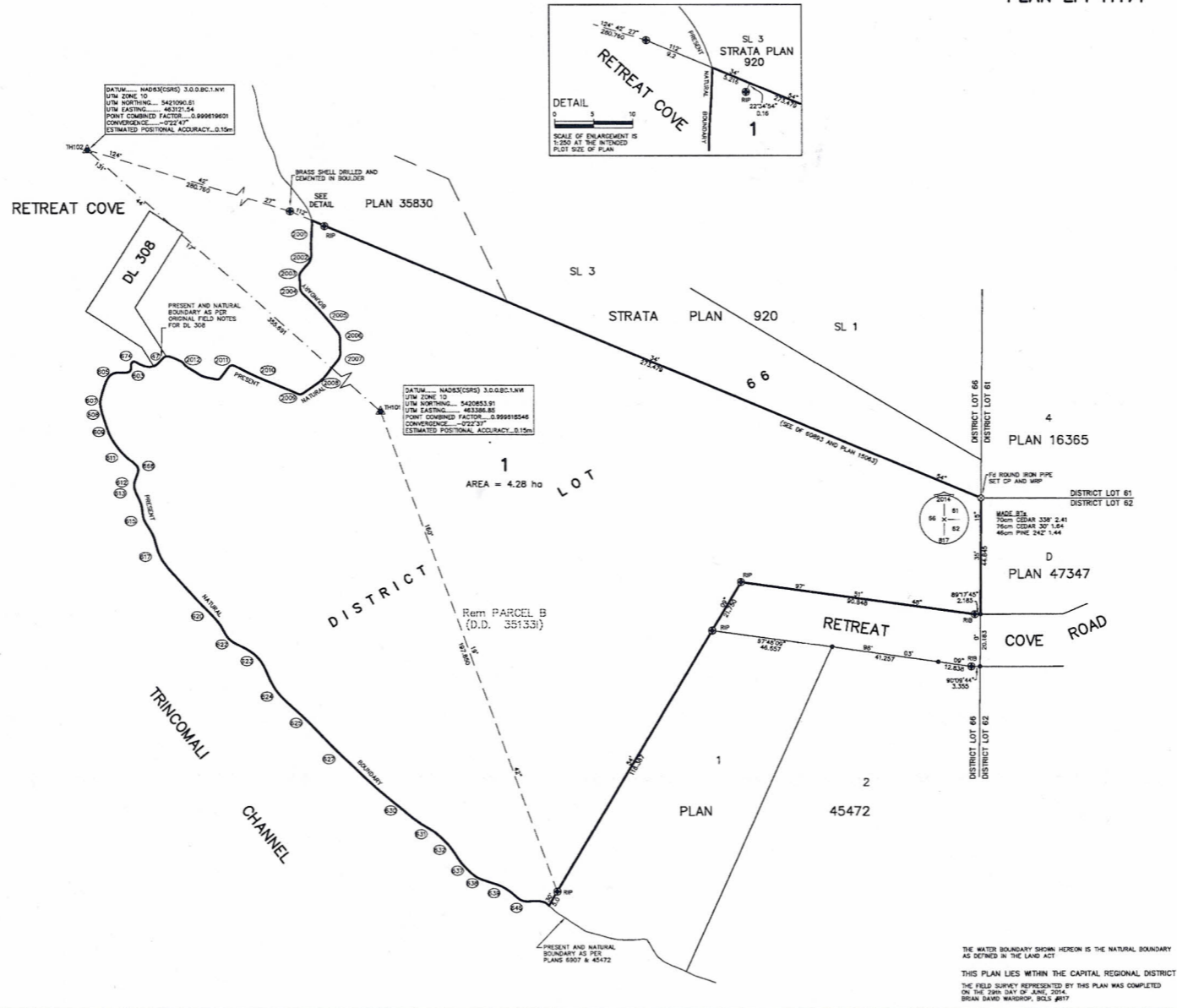
LEGEND
GRID BEARINGS ARE DERIVED FROM DUAL FREQUENCY DIFFERENTIAL GNSS OBSERVATIONS AND ARE REFERRED TO THE CENTRAL MERIDIAN OF UTM ZONE 10 (12° WEST LONGITUDE)
TO OBTAIN LOCAL ASTRONOMIC BEARINGS REFERRED THROUGH SELECTED POINTS APPLY CONVERSION AS SHOWN
THIS PLAN SHOWS HORIZONTAL GROUND-LEVEL DISTANCES UNLESS OTHERWISE SPECIFIED TO LOCAL GRID DISTANCES MEASURED GROUND-LEVEL DISTANCES BY THE AVERAGE COMBINED FACTOR OF 0.99991877. THE AVERAGE COMBINED FACTOR HAS BEEN DETERMINED BASED ON AN ELLIPSOIDAL ELEVATION OF -15.88 METRES
THE UTM COORDINATES AND ESTIMATED HORIZONTAL POSITIONAL ACCURACY ARE DERIVED FROM DUAL FREQUENCY BASELINE TIES TO WESTERN CANADIAN DEFORMATION ARRAY ACTIVE CONTROL STATIONS AT CHEMUNUS "5004" AND NANOOSE BAY "7460" (CSM 815656)

- ▲ DENOTES GNSS CONTROL STATION
- DENOTES STANDARD IRON POST FOUND
- ⊙ DENOTES NON STANDARD IRON POST FOUND
- ⊕ DENOTES STANDARD CAPPED POST SET
- DENOTES STANDARD IRON POST SET
- RP DENOTES ROUND IRON PIPE
- RP DENOTES ROUND IRON PIPE
- MRP DENOTES METAL REFERENCE POST
- ⊙ DENOTES OBSERVATION TO PRESENT NATURAL BOUNDARY

NOTE:
SOME POSTS AND LINES HAVE BEEN DAGGERED FOR CLARITY
BEARINGS TO BEARING TREES ARE MAGNETIC
PRESENT NATURAL BOUNDARY HAS BEEN DERIVED BY CONVENTIONAL AND RTK OBSERVATIONS

FROM	BEARING	DISTANCE	TO
101	335°43'44"	72.18	2008
101	332°25'50"	64.39	2003
101	329°28'44"	61.09	2003
101	329°27'24"	55.89	2004
101	329°39'18"	42.88	2008
101	331°20'00"	33.30	2008
101	323°07'45"	28.21	2007
101	284°34'58"	25.50	2008
101	282°07'40"	31.62	2008
101	284°44'58"	43.70	2010
101	281°21'04"	79.84	2011
101	283°39'18"	78.38	2012
101	281°00'18"	87.84	41
101	281°34'57"	86.90	874
101	279°50'29"	87.90	803
101	278°00'01"	104.67	808
101	272°53'53"	108.08	807
101	272°00'04"	107.87	808
101	268°09'59"	105.43	808
101	268°09'48"	98.73	811
101	257°05'53"	86.02	868
101	258°01'14"	87.33	812
101	252°20'18"	88.41	813
101	248°12'18"	100.38	815
101	236°30'01"	103.88	817
101	221°17'00"	101.83	820
101	212°45'53"	105.83	822
101	207°48'48"	105.92	823
101	200°45'41"	114.59	824
101	184°09'58"	122.00	828
101	187°17'58"	132.53	827
101	177°21'02"	152.71	830
101	172°19'13"	162.14	831
101	171°19'41"	168.83	832
101	169°37'58"	178.43	837
101	168°14'15"	183.85	838
101	160°48'42"	188.74	839
101	152°44'09"	196.56	840

FROM	BEARING	DISTANCE	TO
101	313°18'08"	58238.58	MAND
101	282°30'55"	15082.82	SC04
102	282°20'28"	14458.31	SC04



PLAN EPP41171

MCCORMAN ASSOCIATES
LAND SURVEYING LTD.
SUITE 1, 1351 ESTEVAN ROAD
NANAIMO, B.C. V9S 3Y3
TEL: 250-716-3338
FAX: 250-716-3339
OUR FILE NO. 2232-20147-01
OUR DRAWING NO. 00147-01871.DWG

THE WATER BOUNDARY SHOWN HEREON IS THE NATURAL BOUNDARY AS DEFINED BY THE LAND ACT
THIS PLAN LIES WITHIN THE CAPITAL REGIONAL DISTRICT
THE FIELD SURVEY REPRESENTED BY THIS PLAN WAS COMPLETED ON THE 28th DAY OF JUNE, 2014.
BRIAN DAVID WAGROD, BOLS #817